

Landmark Office Building

205 S. Whiting Street
Alexandria, VA 22304

**Office Space Available Starting
at \$35.00/sf Full Service**

HIGHLIGHTS

- Just off I-395 at the Duke Street Exit close to future location of iNova Alexandria Hospital
- Free surface and garage parking
- All-inclusive pricing
- On-site property management and maintenance
- Snack shop in the lobby as well as several medical offices and retail businesses within the building, such as hair salon, gym and payroll processing

AVAILABLE SUITES

- Suite 401 815 SF \$2,375/month
- Suite 204 2600 SF NEW Shared Medical Space

PRICING AND TERMS

- Starting at \$35.00/sf, full service, including daily limited cleaning
- 5 – 10 years

CONTACT AND FURTHER INFORMATION

Cecilia Gondor, Managing Member

L&M Management LLC

101 S. Whiting Street, Suite 113

Alexandria, VA 22304

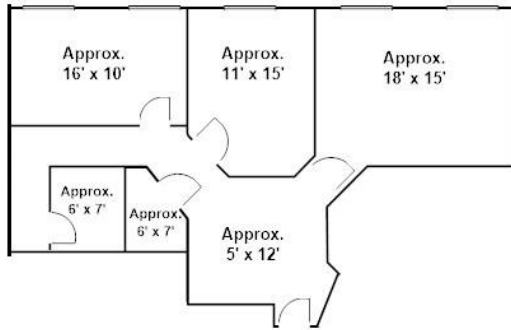
(w) (703) 751-5100

cgondor@rentatlandmark.com

www.LeaseAtLandmark.com



Pricing information as of 4/2024 and is subject to change



SUITE 401
 815 SF
 \$2,375/month

This comfortable suite includes 3 executive offices with windows, a spacious reception area and 2 storage and/or IT rooms.

LANDMARK OFFICE BUILDING
 Suite 401
 815 Square Feet
 205 S. Whiting St.
 Alexandria, VA 22304

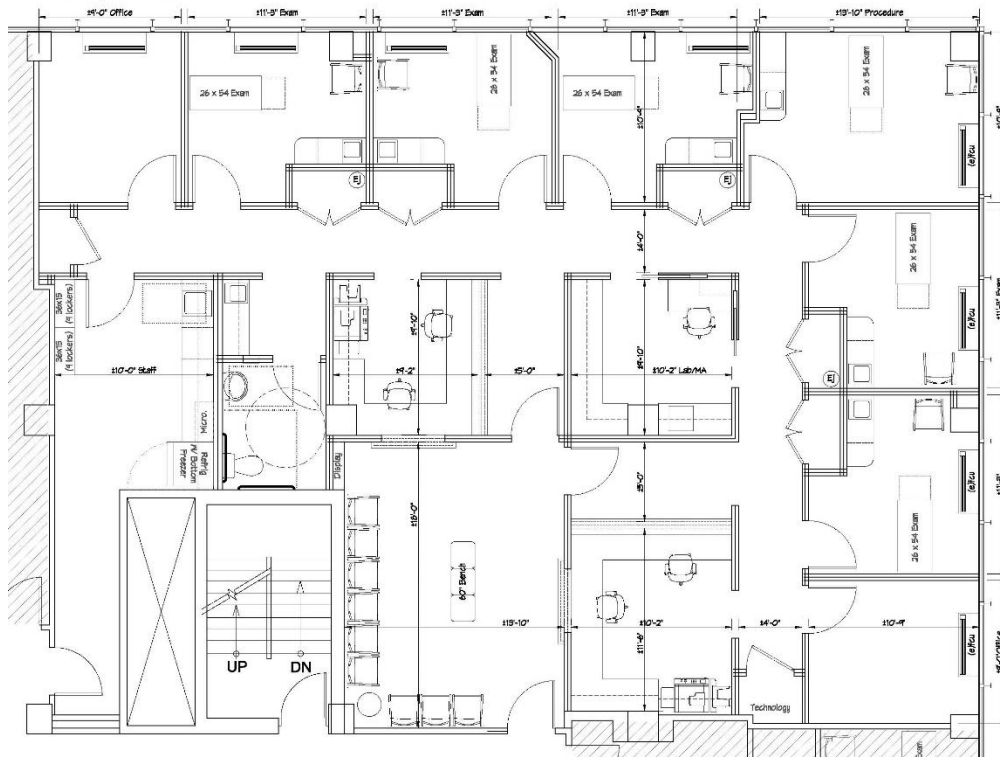
Pricing information as of 4/2024 and is subject to change

ASK ABOUT OUR NEW SHARED MEDICAL SPACE FACILITY COMING IN LATE 2024!

CHJ3.inc.
 architecture
 703.378.7222 p
 www.chj3architecture.com

Suite 204 - Shared Medical (a)
 205 S Whiting Street, Alexandria, Virginia

Scale 3/16"=1'-0"
 3.23.24



Samples of other build outs



CONTACT AND FURTHER INFORMATION – (703) 751-5100 -- www.LeaseAtLandmark.com