

# Landmark Towers

Commercial Offices and  
Residential Apartments  
101 S. Whiting Street  
Alexandria, VA 22304

*Medical and Office Space Available*

## HIGHLIGHTS

- Just off I-395 at the Duke Street Exit
- Retail services available on lower levels
- Free surface parking
- All-inclusive pricing
- 24/7 Front Desk & package receiving services
- Recent renovations throughout the building
- Captive potential client base in residential apartments on 11 upper floors
- On-site property management and maintenance
- Other tenants include: deli, dry cleaners, barber shop, beauty salon, tax services, dentists, doctors, travel agency, preschool and much more.



## AVAILABLE SUITE

- Suite 104      440 SF      \$1,100/mo.
- Suite 205      495 SF      \$1,445/mo.

## PRICING AND TERMS

- Full service, including daily limited cleaning
- 5 – 10 years

## CONTACT AND FURTHER INFORMATION

**Cecilia Gondor, Managing Member**

L&M Management LLC

101 S. Whiting Street, Suite 113

Alexandria, VA 22304

(w) (703) 751-5100



[cgondor@rentatlandmark.com](mailto:cgondor@rentatlandmark.com)

<https://www.LeaseAtLandmark.com>

*Pricing information as of 5/2024 and is subject to change*

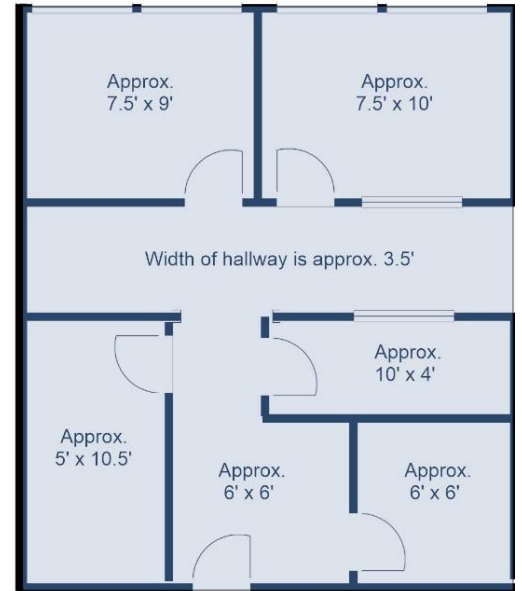
### SUITE 104

440 sf Office Space

\$1,100/month

*This first floor suite boasts high ceilings and lots of storage space. Two rooms have large window areas. Ideal for retail services in an office building setting.*

### SUITE 104 Approx. 440 square feet



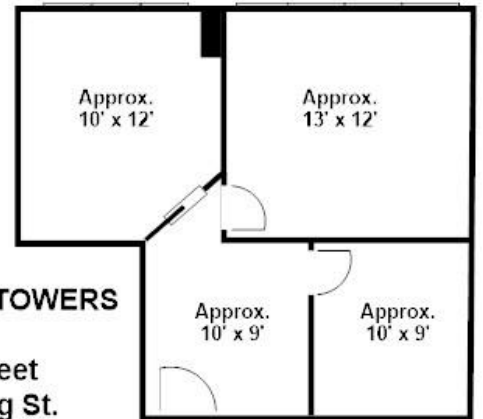
### SUITE 205

495 sf Office Space

\$1,445/month

*Small suite with 2 bright window offices. A reception/waiting area plus storage space completes the floor plan. **Excellent condition** and ready for immediate move in.*

### LANDMARK TOWERS Suite 205 495 Square Feet 101 S. Whiting St. Alexandria, VA 22304



rentable square feet include a core factor of 5%



Pricing information as of 4/2024 and is subject to change